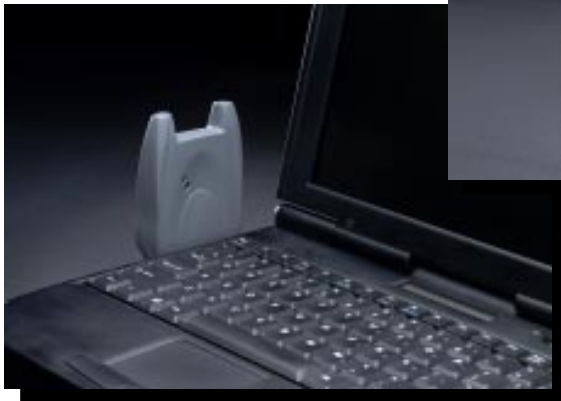
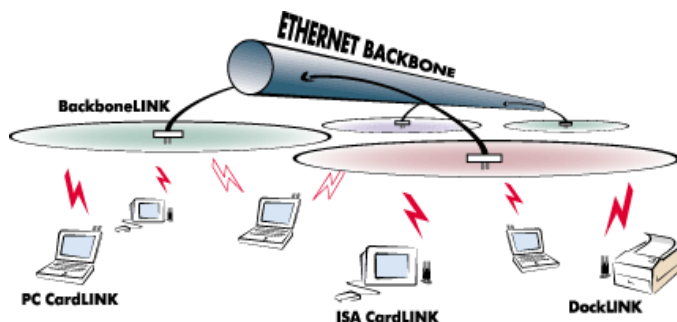


Wireless MOBILINK Model 140 (Draft)



RadioLAN's Wireless MOBILINK™ is the first LAN adapter of its kind to provide a high-speed wireless connection to your network. The MOBILINK is a one-piece PC card with the radio transceiver attached - providing flexible, reliable, mobile computing for laptop users. Access to a 10BaseT network can be provided through RadioLAN's wireless BackboneLINK™. Optional encryption upgrades are available for extra security concerns. The MOBILINK operates at full Ethernet speed - 10Mbps - and is compliant with the IEEE 802.3 Ethernet standard.



The MOBILINK Model 140 includes a Type II PC card with a fixed 5.8GHz radio transceiver, a Plug & Play installation program and management software. As with all RadioLAN/10 products, the MOBILINK operates at 10Mbps and performs just like 10BaseT - but without the wires. This is the only one-piece wireless PC card that offers you the reliability you expect from your LAN, while providing you with the mobility you need.

RadioLAN's MOBILINK provides the mobility necessary for today's growing businesses. It can easily adapt to SOHO applications as well as heavily-trafficked Enterprise LANs. It provides seamless roaming capabilities between RadioLAN access points. Its lightweight, one-piece design allows for complete flexibility, with no extra cables to get in the way.

Features

- 10Mbps wireless connectivity
- Compact, one-piece design
- Plug & Play installation
- Communicates up to 120' between computers in a typical office environment
- Compliant with VoIP and Video H.324 and H.325 multimedia specifications
- RadioNET™ Manager, 10BaseRadio™ network management
- 128 wireless per access point
- Optional encryption
- Access to 10BaseT networks with RadioLAN's wireless access points
- Seamless roaming between access points
- Low power, maximizes battery life
- No FCC license required

RadioLAN's high-speed wireless LAN solutions let you spend more time concentrating on the task at hand rather than trying to find an available wire connection for your computers and other networked equipment. Schools, hospitals, large corporations and small businesses all benefit from the flexibility and reliability of RadioLAN's 10Mbps wireless network connectivity.

Independent testing organizations have measured RadioLAN's wireless throughput at better than or equal to wired 10BaseT solutions. RadioLAN's total cost per node is less than wire, making your capital investment stretch farther, while still providing you with the speed your network requires.

Network management and configuration is simple using RadioLAN's RadioNET Manager, which allows you to view your entire wireless network at a glance, providing instant information on connectivity.



RadioLAN/10™ System

Model Numbers	MOBILINK™ 140 ISA CardLINK™ 101 (for desktops) PC CardLINK™ 130 (two-piece PCMCIA) BackboneLINK™ 208 (stand-alone access point) DockLINK™ 408 (wireless transceiver)
Warranty	1 Year parts and labor (return to factory)
Frequency	5.8 GHz ISM band (unlicensed), U-NII band (unlicensed)
Technology	Narrow band microwave transmission
Throughput	10Mbps
Range	Up to 120' radius (35 meters) - semi-open, 300' radius (90 meters) open environments; will cover approx. 10,000-12,000 square feet (950-1100 square meters)
Security	2-level network access control, optional RSA encryption
Topology	Peer-to-peer architecture
Min. computer requirements	486 or faster with 16MB RAM (101, 130, 140)

MOBILINK Specifications

Part Number	140-008
Dimensions	2.5" (6.4 cm) width, 4" (10.2 cm) radio length, 3.8" (9.7 cm) PC Card length
Weight	3.8 oz

Network Interface Card

Bus Interface	16-bit Type II PC Card
Media Access Protocol	CSMA/CA for wireless domain
Operating Systems Supported	Plug & Play, Windows 95, 98, NT
System Power Consumption	Typically 10-15% of a portable battery

Radio Transceiver Unit

Transmission power	50mW peak power per station, 25mW average power per 100 milliseconds
Antenna	2 monopole antennas with diversity
LEDs	2 (Tx & Rx)

Software

Wireless Operating System	10BaseRadio™
Management	RadioNET™ Manager

Environmental

Temperature	0° - 60° C
Relative humidity	20 - 80%
Approvals	FCC Class B Parts 15.249 and 15.247, CE ETSI: EST.300.440 CEPT/LPD/DK/9731

RadioLAN
www.radiolan.com

Corporate Headquarters
455...DeGuigne...Drive
Sunnyvale...CA...94086
Phone...408-616-6300
Fax...408-524-0600

European Headquarters
Wittestr...30K
D-13509...Berlin...Germany
+49.30.435.72.421
+49.30.435.72.400.FAX

GENUINE
RSA
ENCRYPTION ENGINE

10BaseRadio